

**IOWA**  
*Royal* 2012  
Shorthorn  
Sale

**Tuesday, February 14, 2012**

**11:00 a.m. • Penningroth Arena**

**Iowa State Fairgrounds • Des Moines, Iowa**

# IOWA

## Royal

Shorthorn Sale

**Tuesday, February 14, 2012**

**11:00 a.m. • Penningroth Sales Arena  
Iowa State Fairgrounds • Des Moines, Iowa**

### SCHEDULE OF EVENTS:

**Sunday, February 12th**

Sale Cattle Arrive

**Monday, February 13th**

8:00 a.m. Process Sale Cattle

1:00 p.m. Iowa Royal Shorthorn Video Parade, Pavilion

6:30 p.m. Iowa Shorthorn Association Annual Banquet & Meeting, FFA Hall. Please contact Brad Langhoff for reservations (so that he can get a head count) before February 5th at 319-360-2471

**Tuesday, February 14th**

**11:00 a.m. Iowa Royal Shorthorn Sale, Penningroth Sale Arena**

### IMPORTANT SALE INFORMATION:

#### Sale Day Phones:

Don Cagwin cell: 217-341-7552

Expo Office - 515-262-3111

Cattle Barn Office: Ext. 301 and 304; Sale Block: Ext. 302

**Sale Headquarters:** Holiday Inn Downtown, 515-283-0151; *directions from fairgrounds - turn left on University and go one mile to I-235W exit. Take I-235W to 6th & 7th Street exit. Ramp comes right to hotel entrance. Call direct for your room reservations. Refer to the Iowa Shorthorn Sale; we have a block of rooms set aside.*

#### Auctioneer:

**Bruce Brooks**, Marietta, Oklahoma, 580-276-5137 • cell: 580-695-2036

#### American Shorthorn Association Representatives:

**Bert Moore**, executive secretary/treasurer - 701-541-5035

**Patrick Wall** - 402-658-4258 • **Jake Alden** - 402-660-9048

**Aaron Hahn** - 308-645-4488

#### Livestock Press Representatives:

**Darryl Rahn**, *Shorthorn Country*, 217-473-1124

**Tom Rooney**, *Midwest Marketer*, 515-967-2629

**Mike Soreson**, *Livestock Plus*, 641-743-2991

#### Marketing Representative:



**Aegerter Marketing Services, Inc.**

**Jeff K. & Darla Aegerter**

520 South Evergreen Drive • Seward, Nebraska 68434

402-641-4696

jaegerter@neb.rr.com • www.aegertermarketing.com

#### Sale Management by:



**Cagwin Cattle Services, LLC**

P.O. Box 77 • Virginia, Illinois 62691 • Office: 217-452-3051 • FAX: 217-452-3053

**Don Cagwin**: cell: 217-341-7552 • **Cindy Cagwin-Johnston**: 217-452-3056

cagwincattle@cascomm.com

### GENERAL INFORMATION

**Mailed Bids:** Mailed or telephoned bids will be handled in a most confidential manner. If you are unable to attend the sale personally, simply contact a representative of the sale far enough in advance prior to sale day. They will be able to assist you at ringside on sale day.

**Delivery:** Every effort will be made by the sellers to assist you in the delivery of your purchases should you need assistance.

#### Update On Breeding And Calving Information:

There will be added information available at the sale site that will list any additions to the catalog information.

**Terms And Conditions:** Terms of the sale are cash. Settlement is to be made with the clerk immediately following the sale and before the cattle are removed from the premises.

**Billed Accounts:** All billed accounts are due within 10 days following the date of the sale. At 10 days, a two percent service charge will be added to the unpaid balance and an additional two percent will be added every 30 days thereafter unless previous arrangements have been made with the owners or sale manager.

**Liability:** Each animal will be at the buyer's risk as soon as sold, but will be cared for by the sellers for a reasonable amount of time. Neither the owners, employees, auctioneer, sale manager, or other affiliated personnel can be responsible for any accidents, but they will make every effort to provide for the comfort and safety of those attending.

**Health:** Each animal will have a state approved health certificate for interstate shipment. Buyers should make themselves aware of the health requirements for their respective states.

**Breeding Guarantee:** The Standard Breeding Guarantee as endorsed by the American Shorthorn Association will be followed.

**Insurance** will be available for your purchases from the sale clerk.

**Registration And Transfer:** All animals sell with completed pedigrees or applications for registration in the hands of the sale manager.

**Announcements** made sale day will take precedence over all printed material in this catalog.

#### American Shorthorn Association Genetic Defect

**Disclaimer:** Unless an animal is listed on the American Shorthorn Association "genetic defect status list", the American Shorthorn Association makes no representation of any kind as to whether or not the animal has a genetic defect.

## Iowa Beef Expo Heifer Award

The Iowa Beef Breeds Council has started a program in which each breed holding a sale at the Iowa Beef Expo will have the opportunity to present a \$500 Iowa Beef Expo Heifer Award sponsored by the Iowa Beef Breeds Council to a junior exhibitor who purchased and exhibited a heifer from their breed sale. Each breed association has been asked to develop their own criteria for this award. Listed below are the two requirements of the Iowa Beef Breeds Council.

The Iowa Beef Breeds Council will award \$500 to the junior exhibitor of the highest ranking heifer purchased from each breed sale at the 2012 Iowa Beef Expo and exhibited at the 2012 Iowa State Fair. Heifers will be ranked at the discretion of each breed association under the following conditions:

1. The heifer must have been purchased in an Iowa Beef Expo sanctioned sale and exhibited by a junior at the 2012 Iowa State Fair.
2. Only one heifer per breed sale (11 total) will be awarded. Therefore, high and low percentage cattle will be considered for one award. Furthermore, cattle with multiple breed registrations may only be awarded by the breed association which sold those cattle at the 2012 Iowa Beef Expo.

## Golden Broom Award

Sponsored by Cyclone Trace Cattle Company, John Hagie. Presented to the Top Shorthorn Herdsman selected by the Iowa Shorthorn Association.

LIVE ON THE INTERNET. LIVE AUDIO, VIDEO, BIDDING.

# LiveAuctions.TV

Real time bidding is available via the internet. Live audio and live video will allow buyers to bid on animals just as if they were present at the sale. Buyers must create an account prior to the sale. Go to [www.iowabeefexpo.com](http://www.iowabeefexpo.com) or to [www.LiveAuctions.tv](http://www.LiveAuctions.tv) to create an account and register for a buyer number. If you cannot attend the sale because of weather traveling conditions or scheduling conflicts, please use LiveAuctions.TV. The Parade will also be available for your viewing at any time.

## 2012 Iowa Shorthorn Association Honored Breeder Tom and Jan Mitchell, Mitchell Shorthorns

I first got into the livestock business at the age of 10. Bill Irvine sold me my first heifer calf (Hereford) and gave me the cow. In my 4-H days I showed and raised Herefords and Shorthorns. I showed in Tama County against the likes of Gary & Carol Minish, John Putney, Daryl Strohhahn and Johnnie Hook. I didn't have very many champions against those individuals

After college and a tour of duty in the Air Force I settled in Waverly, Iowa where I met and married my wife, Jan. We have four children, 14 grandchildren and two great-grand daughters. I started my own Accounting business in Clarksville, Iowa and still operate it today.

In the late 80's my brother, Randy, and I started owning Shorthorn cattle together. At the time the cows were all kept in Missouri. My niece, Dawn, and my son, Dan, showed Shorthorns together. They showed cattle in Missouri, Iowa, Kansas City, Denver and Louisville. The kids were better known than Randy or me. Randy was known as "Dawn's Dad" and I was known as "Dan's Dad". They, in fact, had chairs embroidered with that on the back so people knew who we were.

In the 90's we started bringing some of the Shorthorn cows to Iowa. In September of 1991 I bought my first Shorthorn bull from Larry Kohstaedt "KF Double Take". He was a son of Ar Su Lu Ladd. He was frame 7 bull, small at that time but he turned out to be a calving ease bull. He is still used today on heifers. I started selling cattle at the Iowa Beef Expo in the mid 90's and have missed only one year, but Randy brought a bull to sell the year I missed. A lot of our cows go back to Dale Studer's breeding. As that is how the grandkids got started, with a Studer bred heifer. This year Dan's two boys have animals in the Iowa Royal Sale.

In 2003 we became part of the Generation of Excellence Sale with the Tim Loudon and Dale Studer Families. We sold cattle with them through 2008. In 2009 & 2010 we sold cattle at the Cedar Valley Sale. In 2011 we were asked to be part of the Dale Studer Family Sale and we accepted.

In 2009 we were able to buy an interest in DF Waco from our good friend Bob Duis. Our top two selling heifers at our sale last fall were sired by DF Waco. We are selling two head in this year's Iowa Royal Sale sired by DF Waco.

I have held all the offices on the Iowa Shorthorn board and I am the current treasurer. I have been active in two different county cattlemen's board and held offices in both counties. I have been treasurer and am current director of the Butler County Fair. I have been treasurer of the 2006, 2008 and the upcoming 2013 Shorthorn Junior Nationals.

With Dan and his wife, Renea and three sons', Mason, Braeden and Cooper, we have had success raising, showing and selling our Shorthorn cattle. We do it as a "Family". Family is what the Shorthorn breed is about. From the smallest to the largest breeder they are Families. Family is why we got into the Shorthorn business and will be involved as long as it is "Family".

I and Jan wish to thank the Board of the Iowa Shorthorn Association for this honor. When I look at the list of past Honored Breeders I feel very, very, humbled and honored.



# Special Cattlemens Offers

## Hawkeye Breeders Service, Inc.

David & Brandy Jensen

515-993-4711 • [www.hawkeyebreeders.com](http://www.hawkeyebreeders.com)

### "THE MIDWEST'S MOST OUTSTANDING BULL HOUSING & COLLECTION CENTER"

Hawkeye Breeders offers one free semen collection on any one bull that brings \$2,500 or more in any of the sales held during the 2012 Expo. The collection work must be completed prior to the 2013 Iowa Beef Expo. Bull must be presented to the Adel, IA collection site.



### "WINDSHIRTS FOR ACQUISITIONS"

Hawkeye Breeder Service, Inc. will present specially embroidered Iowa Beef Expo Windshirts to the purchaser of the High Selling Bull and High Selling Female in each sale at the 2012 Iowa Beef Expo.

## Trans Ova Genetics

800-999-3586 • [www.transova.com](http://www.transova.com)

TRANS OVA

Trans Ova Genetics is offering to the purchaser of the high selling female in each breed selling 25 head or more at the 2012 Iowa Beef Expo, one free embryo flush on the female of his/her choice from his/her breeding herd and three free transfers into the owners recipients. The embryo work must be completed prior to the 2013 Iowa Beef Expo. Contact Mark Johnson for complete details on this offer!

## Muir Embroidery

515-386-4196

## Livestock Plus Inc.

641-745-7949 • [www.livestockplusinc.com](http://www.livestockplusinc.com)

Livestock Plus Inc.

Muir Embroidery and Livestock Plus Inc. will present specially embroidered Iowa Beef Expo Jackets to the consignors of the High Selling Bull and High Selling Female in each sale. Jacket must be ordered before the end of the 2012 Iowa Beef Expo.



## Purple Bound Show Feeds, R&B Feeds, & U.S. Feeds

712-243-1064 • [purpleboundshowfeeds.com](http://purpleboundshowfeeds.com)

### "CALVING MINERALS WITH BIO-MOS"

Purple Bound Show Feeds, R&B Feeds, & U.S. Feeds will present certificates for one free bag of U.S. Core Calving Mineral with BioMos to the purchaser of the High Selling Bull and High Selling Female in each sale. Certificate must be redeemed at the booth before the end of the 2012 Iowa Beef Expo.



### "PURPLE BOUND"

We will also be presenting certificates to the IJBA Breed Champions and Reserves as well as the IJBA Top 5 Exhibitors for free bags of feed.

## Hawkeye Tack & Western Wear

800-310-8225 • [www.hawkeyetack.com](http://www.hawkeyetack.com)



### "YOUR WESTERN STORE LOCATED DIRECTLY ACROSS FROM THE IOWA STATE FAIRGROUNDS"

All buyers registered prior to the start of each of the breed sales held at the Iowa Beef Expo, will be eligible to win a special embroidered Iowa Beef Expo cap. Hawkeye Tack will also be presenting the IJBA Top Year End Award Winners with special boot certificates and Wrangler Jean certificates. Hawkeye Tack will also be offering all who attend the Expo a certificate good towards \$500 off the purchase of a New Trailer and 20% off 1 Regular Priced Item, some exclusions will apply.

**SLH SOLUTIONIST CHOICE \*x4170346**

bd 02/12/2010 rwm bull polled LE RE 101

**1**

CF SOLUTION X ET \*x, rwm  
**SULL GNCC SOLUTIONIST ET \*x, roan**  
 K-KIM MP MONA LISA 34P \*x, white  
 CF SOLUTION X ET \*x, rwm  
**SULL DESTINY'S CHOICE ET \*x, r/w**  
 WHR V8 DESTINY CHOICE3948 ET \*x, roan

BEPD	5.0
WEPD	17.1
YEPD	32.8
MEPD	1.0

*Haywood Cattle Co.*

A big, stout two-year-old that could breed a lot of cows. Every great herd bull is backed by powerful cow families; Choice is loaded with them. Destiny Choice, Mona Lisa and Desert Rose. This bull has a lot of performance with a moderate birth weight. BW: 82 lbs. WW: 751 lbs. YW: 1235 lbs.

**OAKVIEW REUBEN 025J \*x4171404**

bd 09/27/2010 rwm bull polled LE 1025

**2**

CF TRUMP X \*x, roan  
**OAKVIEW BIG JAKE 708TP ET \*x, red**  
 CF EQUITY FOOL 88 X \*x, red  
 OAKVIEW CHECKMATE 15T \*x, roan  
**OAKVIEW COUNTESS C09 \*x, rwm**  
 AF LR COUNTESS 735 x, rwm

BEPD	4.4
WEPD	(16.8)
YEPD	(30.7)
MEPD	2.8

*Oakview Shorthorns*

Reuben 025J is as fancy and stylish as any young herd bull prospect you will find. He is long bodied, deep ribbed and very good on his feet and legs. You will appreciate his big hip and lower quarter.

**O-DALE LEGEND \*x4175157**

bd 10/26/2010 red bull polled LE 0235

**3**

RED ROSE GOLD SPEAR RUFFIAN \*x, roan  
**ULURU ULYSSES 15U x, rwm**  
 RENOSA CHOICE 1R x, rwm  
 AF SL FINISH LINE \*x, roan  
**LSF FANTASY GIRL 713 \*x, red**  
 AF FANTASY GIRL 935 \*, roan

BEPD	3.8
WEPD	(22.7)
YEPD	(36.1)
MEPD	3.2

*Reanna Obrecht*

O-Dale Legend is a red, stout made bull that will add pounds to your breeding program along with style for the show ring. He is probably one of the thickest bulls we have ever taken to the expo. If you need thickness and pounds, this is the bull for you. TH/PHA Free. BW: 89 lbs.

**VTS COUNT ON RUBY 1150 \*x4172955**

bd 11/05/2010 roan bull polled LE RE 1150

**4**

CF SOLUTION X ET \*x, rwm  
**CYT FINAL COUNTDOWN 866 ET \*x, roan**  
 WHR LS DOLLY D 2116 ET \*x, roan  
 MILLVALE PATTERN 3723 \*x, roan  
**TS RUBY 331N \*, r/w**  
 HOMEDALE FASHION F \*, rwm

BEPD	4.2
WEPD	(19.9)
YEPD	(35.1)
MEPD	0.2

*Val Thoreson Shorthorns*

VTS Count On Ruby 1150 is a fall yearling bull. This guy is loaded with meat, has a nice big foot under him, good bone and he is as long as you can make one without them falling apart. He is the natural calf of my Ruby donor cow and CYT Final Countdown 866ET. I cannot say enough good things about his dam; she's as hard working as you can make one. If you are looking for a bull that can add value to your commercial herd by adding pounds and performance or one that will work with your purebred Shorthorns, come take a look at this bull! Smooth polled to boot! Check him out at [www.valthoresonshorthorns.com](http://www.valthoresonshorthorns.com).

**O-DALE HERCULES \*x4175158**

bd 12/27/2010 red bull polled LE 0238

**5**

RED ROSE GOLD SPEAR RUFFIAN \*x, roan  
**ULURU ULYSSES 15U x, rwm**  
 RENOSA CHOICE 1R x, rwm  
 K-KIM PAYTON 18N ET \*x, roan  
**FAF KILLIAN ROSE 558 \*x, red**  
 NPS KILLIAN ROSE 13TH 155 \*x, roan

BEPD	2.6
WEPD	(24.6)
YEPD	(37.9)
MEPD	6.5

*O-Dale Farms*

Hercules has been a very stout calf since birth. He's thick, deep and full of meat. He was the Senior Bull Calf Champion at the Iowa State Fair PACE Show. This is the first Ulysses bulls to sell and we think they are the best we have offered. TH/PHA Free. BW: 88 lbs.



**IMPORTANT SALE INFORMATION:**

**Sale Day Phones:**

Don Cagwin cell: 217-341-7552  
 Expo Office - 515-262-3111  
 Cattle Barn Office: Ext. 301 and 304; Sale Block: Ext. 302

**Sale Headquarters:** Holiday Inn Downtown, 515-283-0151; *directions from fairgrounds - turn left on University and go one mile to I-235W exit. Take I-235W to 6th & 7th Street exit. Ramp comes right to hotel entrance. Call direct for your room reservations. Refer to the Iowa Shorthorn Sale; we have a block of rooms set aside.*





**MITCH'S HORTON 103 ET \*x4175344**

bd 01/03/2011	rwm	bull	polled	LE 103	
<b>6</b>	WHR SONNY 8114 ET *x, roan			<b>BEPD</b>	5.1
	DF WACO 6W ET *x, red			<b>WEPD</b>	20.1
	DIAMOND HELENA DOTTIE 12H, roan			<b>YEPD</b>	(32.8)
	JM VORTEC ET *, roan			<b>MEPD</b>	1.0
MITCH'S SEDGE PUFF 417 *x, roan				<i>Tom Mitchell</i>	
DSF SEDGE PUFF 96TH *x, roan					

Polled, red, super big topped, big footed and long spined. What else could you ask for? Well then add in that he is sired by DF Waco out of our Vortec donor cow. Horton is a full brother to the top selling heifer at the Family Legacies Sale this past fall. Bob Duis also sold two flushmates in his sale last summer. Remember good bulls come from super cow families! BW: 93 lbs. WW: 640 lbs.

**O-DALE HEADMASTER \*x4175004**

bd 01/11/2011	roan	bull	polled	LE 0237	
<b>7</b>	RED ROSE GOLD SPEAR RUFFIAN *x, roan			<b>BEPD</b>	4.2
	ULURU ULYSSES 15U x, rwm			<b>WEPD</b>	(21.6)
	RENOSA CHOICE 1R x, rwm			<b>YEPD</b>	(34.5)
	SS PARADISE 349 ET *, roan			<b>MEPD</b>	1.5
DSF FANTASY GIRL 56U *, white				<i>Wyatt D. Obrecht</i>	
AF FANTASY GIRL 267 *x, roan					

I bought Headmaster's dam in the Iowa Royal Sale from the Studer's. She was the Champion return heifer and won her class in the regular show at the field day. He is a big, stout bull with a lot of performance and a great disposition. TH/PHA Free. BW: 80 lbs.

**STUDER'S RUBY RED 1Y \*x4177820**

bd 01/14/2011	red	bull	polled	LE 1Y RE 1Y	
<b>8</b>	KL PRIME TIME 685 x, red			<b>BEPD</b>	1.9
	KL PRIME TIME PAYMASTER x, red			<b>WEPD</b>	(17.8)
	KL MELITA ROSEWOOD 696 x, roan			<b>YEPD</b>	(29.6)
	SULL GNCC GREY GOOSE ET *x, roan			<b>MEPD</b>	4.7
KFSCDF RUBY'S GIRL 114W ET *x, r/w				<i>Nate Studer</i>	
HD RUBY 903 ET *x, rwm					

Here is a solid red, very thick ended and extremely correct herd bull prospect. He is sired by the touted calving ease sire at Sullivan Farms. Ruby Red is packaged with performance and eye appeal and his age gives you the prime opportunity to begin replicating him in your pastures early this spring. BW: 86 lbs.

**DRM PHINEAS 104 \*x4174230**

bd 01/14/2011	roan	bull	polled	LE 104	
<b>9</b>	WERNACRES ACE HIGH 620 *x, roan			<b>BEPD</b>	3.5
	HI VIEW'S ACE OF DIAMONDS *x, roan			<b>WEPD</b>	16.2
	HI-VIEW 2ND ZELDA *x, red			<b>YEPD</b>	(28.3)
	K-KIM HIGH FIDELITY 55K *x, roan			<b>MEPD</b>	3.3
MMM TRIXIE'S RUBY 431 x, roan				<i>Mason Mitchell</i>	
DSF SILVER RUBY *x, roan					

**Retaining 1/3 in-herd semen use.** Phineas is one of the most powerful bulls we have ever raised. Tremendous lower thickness, ton of rib, smooth shoulder and super profile. He comes from a cow that never misses, a maternal sister was a two day class winner at the 2010 NAILE. With no Trump for six generations and Ace of Diamonds on the top side, Phineas has the tools to produce highly marketable, high selling calves on any set of cows.

**SM SONNY CITY \*x4177060**

bd 01/21/2011	white	bull	polled	LE 56Y	
<b>10</b>	CF TRUMP X *x, roan			<b>BEPD</b>	3.9
	AF SL SIN CITY ET *x, white			<b>WEPD</b>	(19.2)
	NPS MIRAGE 544 ET *sx, roan			<b>YEPD</b>	(29.1)
	WHR SONNY 8114 ET *x, roan			<b>MEPD</b>	4.3
SM SONNY LADY 56R ET *, roan				<i>Shelby Moothart</i>	
JG745 WANDA'S LADY EJ002 *, roan					

Stylish, powerful, structurally correct. This white, January purebred will be one to check out on sale day. For more information or a video call Brent at 641-799-4758.

**WAYMAR AMERICAN MADE \*x4173797**

bd 01/25/2011 roan bull polled LE 125

**11**

4D DOUBLE VISION 7/8 \*x, roan  
**SSS AMERICAN OUTLAW ET \*sx, r/w**  
 KA'BA JEANNE 102 \*, r/w  
 WHR SONNY 8114 ET \*x, roan  
**WAYMAR HAPPY HEATHER \*x, roan**  
 WAYMAR MISTY ET 7/8 \*x, roan

BEPD	4.7
WEPD	(21.1)
YEPD	(29.9)
MEPD	1.2
<i>Jacob Temple</i>	

**Retaining a 1/3 interest.** If you like them hairy and big boned, here he is! He is out of American Outlaw and his dam has WHR Sonny and Highfield Irish Mist in her direct pedigree. The grandam of American Made was RSF Miss Heather 5B, a purebred Maine that was shown 33 times and never beaten. 5B was a three-time division champion at Louisville and National Champion Maine. We feel this is probably the best bull we have ever raised. An incredible herd sire! TH/PHA Free.

**WAYMAR C3 ASSURANCE \*x4173803**

bd 01/27/2011 white bull polled LE 127

**12**

CF TRUMP X \*x, roan  
**CF PRIMO X ET \*x, roan**  
 NPS DESERT ROSE 004 \*, r/w  
 4D DOUBLE VISION 7/8 \*x, roan  
**AMERICAN SWEETHEART ET \*x, roan**  
 KA'BA JEANNE 102 \*, r/w

BEPD	3.5
WEPD	(16.7)
YEPD	(27.9)
MEPD	0.9
<i>Courville Cattle Co.</i>	

**Retaining 1/3 interest.** Here is a great son of Primo out of American Outlaws full sister. This bull had a low birth weight like all the Primo's do and he should straighten out your color patterns. Whether you decide to show him or use him he will definitely excel in either category. TH/PHA Free.

**LSF ACES WILD \*x4179821**

bd 02/04/2011 red bull polled LE RE 103

**13**

WERNACRES ACE HIGH 620 \*x, roan  
**HI VIEW'S ACE OF DIAMONDS \*x, roan**  
 HI-VIEW 2ND ZELDA \*x, red  
 WAUKARU GOLD SHIP \*x, red  
**WAUKARU ENIA 481 x, red**  
 WAUKARU US ENIA 712 \*x, roan

BEPD	0.1
WEPD	18.3
YEPD	(29.2)
MEPD	2.2
<i>Clint Leemon</i>	

Aces Wild has shown great herd sire potential since birth. Low birth weight, unique genetic make-up, smooth shoulders, solid red, polled, genetic defect free and a quiet disposition all contribute to this bull's promising future. Aces Wild is athletic, rugged and ready to go to work.

**ROCA BIG RED BADGER \*x4177213**

bd 02/13/2011 rwm bull polled LE 213Y

**14**

AR SU LU TONIC X x, red  
**ROCA FOXXY'S TONIC \*x, roan**  
 K-KIM FOXXY 27T ET \*x, roan  
 SCC ESKIMO JOE G50 7/8 \*x, roan  
**BIG RED RAISIN \*x, roan**  
 BIG RED RENEE x, rwm

BEPD	2.4
WEPD	21.6
YEPD	(31.0)
MEPD	1.1
<i>Roca ShortHorns</i>	

Badger has a stacked pedigree. The combination of calving ease greats Tonic and Eskimo Joe with the power of Cruiser. His maternal background includes breed legends like Elbee Bessie and Homedale Ruby Di, grandmother of Mindemann Max Rosa. Badger is a meat-wagon. Huge butted, big foot, smooth shoulder and hair. His mother has a perfect udder. If you're wanting calves for the showbarn, replacement pen or feed-lot, here he is. TH/PHA Free. 205 day weight: 720 lbs.

**FSF DIESEL \*x4181771**

bd 02/26/2011 roan bull polled LE RE Y111

**15**

A&T CAPTAIN OBVIOUS 606S x, red  
**LAKESIDE NITRO 804U x, roan**  
 STEVENSTEAD NONPAREIL 31 x, roan  
 PSF SPIN CITY 3T \*x, roan  
**FSF JAZZ CITY 7/8 \*x, roan**  
 PSF HEATWATCH 11S 3/4 \*x, roan

BEPD	-0.2
WEPD	(7.2)
YEPD	(16.9)
MEPD	1.8
<i>Fevold Stock Farm</i>	

What an eye catcher! Diesel is an easy calver out of a first time heifer weighing 62 lbs. This Nitro son has an easy disposition with tremendous growth. You don't want to miss out on this heifer bull!





**CEG TRUE GRIT 106 \*x4174566**

bd 03/03/2011 rwm bull polled LE Y106G

16	JAKE'S PROUD LEADER 243H *, roan	BEPD	-0.2
	JAKE'S PROUD JAZZ 266L *x, roan	WEPD	13.8
	JAKE'S JAZZY 250J 7/8 *x, red	YEPD	(20.7)
	BYLAND VELVET GOLD SPEAR *x, red	MEPD	2.5

This Proud Jazz son is your opportunity to invest in a bull that can be used on heifers. He is a smooth shouldered, long bodied bull that is still adequately stout. True Grit came unassisted out of a heifer and he is still a high performing bull. If you want a polled, dark red, sound, very complete bull, this one's for you. Adj. 205 day weight: 667 lbs.

*Gilman Shorthorns*



**STUDER'S TRADEMARK 22Y x4176062**

bd 03/03/2011 roan bull polled LE RE 22Y

17	MURIDALE MASTER 24M, red	BEPD	2.7
	SASKVALLEY RAMROD 155R x, red	WEPD	(23.8)
	SASKVALLEY DARLING 70M x, red	YEPD	(45.3)
	EIONMOR MARQUIS 86G x, roan	MEPD	-0.9

Big, soggy son of Saskvalley Ramrod, extremely deep sided. Study the pedigree. When you see this bull you will know we are committed to raising and selling "beef bulls". He is another legacy in the making. His mother is a Marquis daughter. Eionmor Marquis 86G - the bull that built me. BW: 96 lbs.

*Dale Studer Family*



**AF CHARGE ON ET \*x4181629**

bd 03/10/2011 red bull polled LE 1103

18	WHR SONNY 8114 ET *x, roan	BEPD	4.3
	DF WACO 6W ET *x, red	WEPD	(21.9)
	DIAMOND HELENA DOTTIE 12H, roan	YEPD	(34.6)
	STUDERS PRETENDER 96TH *x, red	MEPD	-2.5

DF Waco calves have been popular this fall and this young bull calf is no exception. AF Playful Cait 01 has long been one of our popular donor cows producing several top sellers for us as well as Duis Farms. Outcross genetics of Pretender and Dottie help add to the value of this herd sire prospect.

*Alden Farms*

AF Playful Cait 01 ET



**LHMN STRONG MAN ET \*4181891**

bd 03/19/2011 rwm bull horned LE L107

19	STUDERS PRETENDER 96TH *x, red	BEPD	5.4
	K-KIM BASELINE 80S ET *x, roan	WEPD	(26.4)
	K-KIM MONA LISA 34L ET *, white	YEPD	(38.5)
	WHR SONNY 8114 ET *x, roan	MEPD	-1.7

**Retaining an in herd semen use.** The right bull for the right times. You will search far and wide to find a sire with this much true muscle and dimension and still carry it in a very attractive package with a decent birth weight. He's backed by Pretender 96th and the Mona Lisa and on the bottom side, a maternal sister to the legendary Lucky Charm. His two maternal sisters are being exhibited successfully this year by the Swale Family of Illinois and the Beisbier Family of Wisconsin. This bull will be a female producing maching.

*Lefman Shorthorns*



**STUDER'S EXCEED 34Y x4176054**

bd 03/20/2011 roan bull polled LE RE 34Y

20	SASKVALLEY PRIMO 40P x, roan	BEPD	-0.6
	ALTA CEDAR DIABLO 98U x, red	WEPD	(9.8)
	ALTA CEDAR GO GO 52P x, red	YEPD	(21.4)
	EIONMOR MARQUIS 86G x, roan	MEPD	1.0

A real smooth made, Diablo son out of a Marquis daughter with a low birth weight and high performance, he has a lot to offer. This straight beef pedigree will make a great calving ease sire.

*Austin Studer*

## HAHN JUST A DREAM D26Y \*x4173217

bd 03/21/2011 red bull polled LE D26Y

21

ASH VALLEY DUTY 5323 x, red  
**ASH VALLEY DUTY 8597 x, red**  
 ASH VALLEY LADY 5361 x, red  
 K-KIM GOLD VERSION 127R \*x, roan  
**HAHN 8 DREAMS GV8U \*x, rwm**  
 HAHN FANTASY HR803 \*x, rwm

BEPD	1.6
WEPD	30.4
YEPD	46.9
MEPD	7.5

*Hahn Family  
Shorthorns*

It is with great pride that we come back to the Iowa Royal to offer this exciting outcross calving ease sire prospect. He is a solid red, polled, son of our Ash Valley Duty bull that is siring low birth and heavy 205 weight calves. Just A Dream exhibits the practical traits of a big rib cage, big well formed feet, early sexual maturity and balance. Add these to his genetic heritage of optimum performance and eye appeal without the influence of Trump, Proud Jazz or Double Stuff and you have endless breeding options. TH/PHA Free. BW: 80 lbs.; WW: 693 lbs.; Weight as of 1/4/12: 1,040 lbs.; Frame Score: 7.10

## KOLT GN AA RED REWARD 3Y \*x4181559

bd 03/25/2011 rwm bull polled LE 3Y RE

22

TEGM RED ADVANTAGE 100T 3/4 \*x, red  
**SULL RED REWARD 9321 7/8 \*x, red**  
 MCV MARGIE MILLION 503Q \*x, rwm  
 DFS GOLD 002 \*x, red  
**AA GNCC MS PERFECT WEAPON ET \*x, red**  
 AA MISS PERFECT WEAPON 7/8 \*x, r/w

BEPD	2.4
WEPD	(14.6)
YEPD	(25.7)
MEPD	3.3

*Gana-Nisley  
Cattle Co.*

Complete outcross genetics here. Sired by the hot new SULL Red Reward and one of our up and coming donors, this bull is a sure bet. Very balanced numbers in a sound structured, deep sided package.

## GS&J HEIR APPARENT 4Y \*x4177358

bd 03/29/2011 roan bull polled LE RE 4Y

23

JAKE'S PROUD JAZZ 266L \*x, roan  
**JAKE'S PRINCE OF JAZZ 236P \*x, roan**  
 JAKE'S KASSIE 214K 7/8 \*x, roan  
 LAKESIDE POWERPLAY 2P \*x, roan  
**LAKESIDE NONPAREIL 704T \*x, roan**  
 STEVENSTEAD NONPAREIL 31 x, roan

BEPD	-1.2
WEPD	20.8
YEPD	(36.7)
MEPD	4.7

*GS&J Shorthorns*

Non-Pareil 704T does it again, this time by Prince of Jazz! This bull is a maternal sib to the \$5,000 consignment from the 2011 Iowa Royal (GS&J Mr. Obvious) now working in North Dakota for Hansen Stock Farm. This is likely the ONLY bull to sell in any expo in the top 5% for BW AND the top 20% for WW, YW, Milk, CE, and MCE. Not to mention, he is one good rascal. Soft bodied, stout and mobile with huge, square nuts. His mother will be sorted to the donor pen after she calves in 2012...she's earned it.

## KOLT KANE NITRO 133Y \*x4181603

bd 04/15/2011 white bull polled LE 133Y

24

A&T CAPTAIN OBVIOUS 606S x, red  
**LAKESIDE NITRO 804U x, roan**  
 STEVENSTEAD NONPAREIL 31 x, roan  
 SULL GNCC PURE SOLUTION ET \*x, red  
**KOLT AA LADY FORCE 133W ET \*x, roan**  
 AA LADY CORNERSTONE 1J \*x, roan

BEPD	1.3
WEPD	(9.6)
YEPD	(21.7)
MEPD	-0.6

*Kane Aegerter*

One of our first calves by our calving ease specialist Lakeside Nitro. Nitro 133Y offers his sires calving ease in a very stylish, sound, structured package. Safe on heifers.

## KOLT AA AXIS 208Y \*x4181601

bd 04/25/2011 rwm bull polled LE 208Y

25

LCS DESIGNER x, rwm  
**BYLAND AXIS 1085 x, rwm**  
 BYLAND VELVET E 17 x, red  
 AA CORNERSTONE 9445 \*x, rwm  
**KOLT SAPPHIRE 10H \*x, rwm**  
 AA LADY VANESSA 2ND \*x, roan

BEPD	1.7
WEPD	(14.2)
YEPD	(20.8)
MEPD	1.5

*Aegerter Cattle Co.*

**Retaining 1/3 interest.** This is a very unique opportunity. Axis 208Y is sired by the former ASA Balanced Trait Leader Byland Axis and out of our lead donor Sapphire. Complete outcross to today's main stream genetics and an exceptional individual as well. This bull will make an impact.



BULLS



**J&J MIDNIGHT SUN 5Y ET \*xAR53689**

bd 02/17/2011 b/r bull polled LE RE 5Y

CF TRUMP X \*x, roan  
**26** CF PRIMO X ET \*x, roan  
 NPS DESERT ROSE 004 \*, r/w  
 DJ ENGINEER E309 \*x, blk  
 KEN JR SOXS JR16 x, blk

BEPD	2.0
WEPD	13.1
YEPD	(24.7)
MEPD	1.5

*J&J Show Cattle*

Those who love blue roans stop right here, this son of the famous Primo and our donor Soxs will give you some cool calves! He came small and is maturing into a stout and rugged bull that will be ready to go to work for his new owners. TH/PHA Free. BW: 88 lbs. www.jandjshowcattle.com

**J&J PSF MGM GRAND 7Y ET \*xAR53596**

bd 03/19/2011 roan bull polled LE RE 7Y

CF TRUMP X \*x, roan  
**27** DF VEGAS 310M ET \*x, white  
 NPS MIRAGE 544 ET \*sx, roan  
 4D DOUBLE VISION 7/8 \*, roan  
 RH 170 13/16 \*x, roan  
 RH 205B 3/4 x, red

BEPD	5.0
WEPD	16.2
YEPD	(24.5)
MEPD	1.6

*J&J Show Cattle & Preferred Stock Farm*

Wow! A full sib in blood to the past Jr. National Reserve Champion Appendix Heifer in 2007, J&J Sinful Dreams. He is stout, big boned, hairy and polled. This dude will go out and produce some awesome show calves for his new owners. Just think, you won't have to worry about having him out with TH carrier cows. TH Free. BW: 84 lbs. Owned with Preferred Stock Farm, Atlantic, Iowa.

**LSF MD CHIEF BLACK MAGIC \*xAR53445**

bd 03/23/2011 bwm bull polled LE RE 118

AF SL FINISH LINE \*x, roan  
**28** LSF CHIEF ILLINI \*x, white  
 WAUKARU 022 MINNIE 2150 x, roan  
 COWAN'S ALI 4M \*x, blk  
 LSF MD PATTY 622 ET \*x, blk  
 PCY OAK CREEK PATTY \*x, blk

BEPD	1.5
WEPD	(12.6)
YEPD	(20.9)
MEPD	2.2

*Cody Leemon*

Tired of the same genetics over and over again? Chief Black Magic offers a fresh genetic package that includes low birth weight bulls on both top and bottom. Sired by the 2009 National Jr. Show Champion, LSF Chief Illini, and out of a beefy Maine Anjou cow, this exciting herd sire could also be registered as a MaineTainer. He's big boned, square hipped, super stylish and hairy. Great performance with a great look!

**BERN-A-DALE ANNIE OAKLEY 020 \*x4170518**

bd 04/29/2010 rwm bred heifer polled LE 020

DEERPARK LEADER 8TH  
**29** HAZEL LEAP 2ND, roan  
 ROUGHAN WHITE  
 BERN-A-DALE EAGLE ONE x, rwm  
 BERN-A-DALE ANNIE OAKLEY 814 \*x, red  
 BERN-A-DALE ANNIE OAKLEY \*x, roan

BEPD	1.0
WEPD	12.3
YEPD	21.5
MEPD	-1.1

*Bern-A-Dale Shorthorns*

Bred to Muridale Buster; due to calve 4/7/12. The Annies are a great maternal line in our herd and this one is a real brood cow in the making. Very feminine, very complete, a great disposition, top Irish bloodlines on the sire side best of the best performance on the dam's side. All the qualities we put on our shopping list for show heifers and herd replacements. Vibrio-Lepto Vac, CHV, Ivomec.

**BERN-A-DALE CINDY 058 \***

bd 05/02/2010 b/r bred heifer horned LE 058

WHR SONNY 8114 ET \*x, roan  
**30** DRM MICKEY 415 \*x, roan  
 SS MINNIE 862 \*x, red  
 BD CD 609

BEPD	1.7
WEPD	12
YEPD	21
MEPD	0

*Bern-A-Dale Shorthorns*

Bred to Ar Su Lu Hot Stuff, a super Double Stuff son; due to calve 5/11/12. This heifer would be a great start or addition to any ShorthornPlus herd. Hard to fault her. She is a really long bodied, deep, thick, easy keeping, well muscled female with good bone and sound feet and legs. She will be a great producer for many years. Sired by Mickey and an excellent female line on the dam's side. Mated to Ar Su Lu Hot Stuff, a super Double Stuff son who sires light birth weight calves. Vibrio-Lepto Vac., CHV, Ivomec.

**RFL BABY GIRL \*x4177270**

bd 01/25/2011 white heifer polled LE RE B106

**31**

JAKE'S PROUD LEADER 243H \*, roan  
**JAKE'S PROUD JAZZ 266L \*x, roan**  
 JAKE'S JAZZY 250J \*xar, red  
 STUDER'S CONTROLLER 31R \*x, roan  
**BERGS BABY GIRL 1 ET \*x, roan**  
 SGK CALL GIRL ET \*x, roan

BEPD	1.2
WEPD	10
YEPD	15
MEPD	2

*Ripberger Farms*

Baby Girl is by Proud Jazz and out of a Studer's Controller 31R cow purchased from the Berg Family. Baby Girl is a beautiful long fronted, big boned, stout hipped heifer, with loads of volume and eye appeal. She has a super disposition for any young show person. Baby Girl won the calf division at the 2011 Kentucky State Fair Pace Show. She has all the ingredients to be competitive and make a super cow and future donor in your program.



**BRC SCARLET'S CARY \*x4182364**

bd 01/17/2011 rwm heifer polled LE RE 1117

**32**

WAUKARU GOLD CARD 5042 x, red  
**WAUKARU PATENT 8161 ET x, red**  
 WAUKARU 12H MELITA ROSE 5021ET, red  
 SULL-GNOC FINAL SOLUTION ET \*x, rwm  
**CYT SCARLET 9159 \*x, r/w**  
 CYT SCARLET 615S \*, red

BEPD	3.1
WEPD	32.9
YEPD	(52.6)
MEPD	1.2

*B Rge Co Farm*

Here's a chance to own a heifer out of Waukaru Patent 8161. This is a long, deep, heifer with a lot of femininity. This heifer will make a great addition to any herd. Don't pass this one up!

**IMPORTANT SALE INFORMATION:**

**Sale Day Phones:**

Don Cagwin cell: 217-341-7552

Expo Office - 515-262-3111

Cattle Barn Office: Ext. 301 and 304; Sale Block: Ext. 302

**Sale Headquarters:** Holiday Inn Downtown, 515-283-0151; directions from fairgrounds - turn left on University and go one mile to I-235W exit. Take I-235W to 6th & 7th Street exit. Ramp comes right to hotel entrance. Call direct for your room reservations. Refer to the Iowa Shorthorn Sale; we have a block of rooms set aside.

**DF BRIDGET 6Y \*x4173692**

bd 01/28/2011 red heifer polled LE RE 6Y

**33**

ASH VALLEY DOUBLE DUTY 32 x, red  
**ASH VALLEY DUTY 7155 \*x, red**  
 ML OKIE 031 \*x, red  
 LITTLE CEDAR AVIATOR 503X \*x, red  
**CYT BRIDGET 890U \*x, roan**  
 MARTINDELL BRIDGET 216 \*x, roan

BEPD	1.3
WEPD	(17.9)
YEPD	(29.5)
MEPD	3.3

*Val Thoreson Shorthorns*

What a neat heifer! DF Bridget came to my farm at the side of her mother CYT Bridget 8901U. Your homework is done with this one, out of the calving ease ASH Valley Duty 7155 and the beautiful, young, roan, CYT Bridget. DF Bridget is sure to be a money making cow! This heifer is a beautiful cherry red, loaded with rib, and has a big sound structure. check her out at [www.valthoresonshorthorns.com](http://www.valthoresonshorthorns.com).



**LSF PRIMABELLA 106 \*x4177503**

bd 02/10/2011 roan heifer polled LE RE 106

**34**

WERNACRES ACE HIGH 620 \*x, roan  
**HI VIEW'S ACE OF DIAMONDS \*x, roan**  
 HI-VIEW 2ND ZELDA \*x, red  
 MILESTONE WAYMAR SABRE ET \*x, roan  
**LSF PRIMABELLA 511 \*x, roan**  
 WAUKARU PRIMABELLA 3118 ET \*x, white

BEPD	4.8
WEPD	21.5
YEPD	(37.7)
MEPD	3.5

*Leemon Stock Farm*

The Primabellas have consistently topped sales across the country and have been a reliable, predictable, and profitable cow family for us. Combine that maternal longevity with the hot, new bull, Ace of Diamonds, and you get a show heifer/cow prospect that can run with the best. If you like purple, tie into Primabella 106! CHV



**FLATLANDS TEQUILLA ROSE \*x4171768**

bd 03/03/2011 r/w heifer polled LE RE 303

**35**

AR SU LU TONIC X x, red  
**TONIC'S LAST CALL TLC \*x, red**  
 SGK CALL GIRL ET \*x, roan  
 JA BLOODROCK 6J49 \*x, rwm  
**JA HF BOBBY SOX II \*x, rwm**  
 JS BUSTER'S BOBBI SOX x, rwm

BEPD	3.7
WEPD	21
YEPD	32
MEPD	1

*Herman's Flatland Shorthorns*

Here is another great prodigy of Tonic's Last Call TLC. The first things you notice about this quality heifer are her deep full body and sound foundation. This female brings a background of low birth weight and able average rate of gain. Crossed with any bull her genetics along with her straight lines and easy to the eye appeal will do nothing but enhance her offspring. This heifer has unlimited potential in the show ring or your pasture, and has the ability to bring the genetics and foundation that you are looking for to your herd. Remember every herd needs some "TLC".





**VTS DOWN TOWN 381 ET \*x4176568**

bd 03/08/2011 roan heifer polled LE RE 381

**36**

CF SOLUTION X ET \*x, rwm  
**CYT FINAL COUNTDOWN 866 ET \*x, roan**  
 WHR LS DOLLY D 2116 ET \*x, roan

HOMEDALE FLASH x, r/w  
**HOMEDALE FASHION F \*x, rwm**  
 HOMEDALE RED FASHION 7/8 \*x, r/w

BEPD	4.6
WEPD	(21.7)
YEPD	(36.1)
MEPD	0.6

*Val Thoreson Shorthorns*

This heifer is hard to part with, she is the last female selling out of the cow that started it all for me, Homedale Fashion F. This heifer comes from a cow family that beef cattle are modeled after, longevity, sound structure, length of body, excellent maternal traits, and style to burn! Her dam was 16-years-old before I decided it was time for her to go, and even then she had good feet and a good udder but, she was missing too many teeth. This heifer is sure to be an eye catcher in the show ring; she has a bright future as a show heifer and will make an awesome cow. Check her out at [www.valthoresonshorthorns.com](http://www.valthoresonshorthorns.com).

**CEG SHOWGIRLS ASSET 112 \*x4174567**

bd 03/12/2011 white heifer polled LE Y112G

**37**

CF SOLUTION X ET \*x, rwm  
**SULL GNCC ASSET ET \*x, r/w**  
 K-KIM MONA LISA 35L ET \*, white

AF SL SIN CITY ET \*x, white  
**HERR SHOW GIRL \*x, roan**  
 MTS SWEET LADY 95TH \*, r/w

BEPD	3.2
WEPD	17.6
YEPD	(30.5)
MEPD	3.6

*Gilman Shorthorns*

Don't miss out on this great show heifer and donor prospect. This Asset daughter has stood out since birth at our farm. She is a powerful, hairy, and deep bodied female, yet still maintains that feminine angular look, and is as sound as they come. Her mother has been a great producer for us and Showgirl is sure to follow in her foot steps.

**JKN LOVELY LADY Y244 \*4182277**

03/11/2011 rwm horned heifer LE RE Y244

**38**

RF RC SOLID GOLD \*x, red  
**JKN GOLD RUSH 38 \*x, rwm**  
 AR SU LU ROSE MYSIE 3127 \*, rwm

HD BLOODSTONE 603 ET \*x, roan  
**JKN RF LOVELY LADY ET \*x, rwm**  
 BFS LOVELY LADY 732 \*x, rwm

BEPD	5.1
WEPD	22
YEPD	36
MEPD	5

*Ripberger Farm*

Lovely Lady is by a grandson of DFS Gold 002, a past National Champion, and a top daughter of HD Bloodstone and BFS Lovely Lady 732, considered by many the top Lovely Lady cow raised by the Bollum's in Minnesota. This long-fronted feminine heifer is best described as a tank, deep-sided, soggy, big topped, big butted, big boned heifer. She will make someone an excellent easy keeping cow after a great show career.

**SS AUGUSTA PRIDE 144 ET \*4182188**

bd 03/13/2011 red heifer horned LE RE 144

**39**

WHRRT AUGUSTASUNRISE 2107 ET \*x, roan  
**HD SWAGGER 802 ET \*x, roan**  
 HD REFLECTION 021 \*x, rwm

SS DAKOTA THUNDER ET x, red  
**SS AUGUSTA PRIDE 3118 ET x, rwm**  
 SS AUGUSTA PRIDE 063 x, roan

BEPD	2.8
WEPD	(13.9)
YEPD	(21.9)
MEPD	-0.2

*Schrag Shorthorns*

This Swagger X Augusta Pride mating has been one of the most consistent matings we have had. Three flush sisters averaged over \$6,000 in our last Family Event Sale and this could be the best one of the bunch! Extremely deep and powerful, this Augusta Pride superstar has the look and pedigree of a tremendous show prospect, but she will really shine in the donor pen.

**JLS JAZZY MARIE \*x4182181**

bd 03/14/2011 rwm heifer polled LE JLSF RE 61Y

**40**

JAKE'S PROUD LEADER 243H \*, roan  
**JAKE'S PROUD JAZZ 266L \*x, roan**  
 JAKE'S JAZZY 250J 7/8 \*x, red

FF CASPER 545 \*x, roan  
**FF MARIE 918 \*x, red**  
 FF MARIE 640 \*, roan

BEPD	-0.3
WEPD	(8.2)
YEPD	(13.8)
MEPD	2.8

*Long Family Shorthorns*

Tremendous show heifer prospect. Solid red with a couple of white marks. Great spring of rib depth and production, out of a first calf heifer, 58 lbs., birth weight. She will turn into an excellent cow with a moderate frame.

**SCHEDULE OF EVENTS:**

- Sunday, February 12th**  
Sale Cattle Arrive
- Monday, February 13th**  
8:00 a.m. Process Sale Cattle  
1:00 p.m. Iowa Royal Shorthorn Video Parade, Pavilion  
6:30 p.m. Iowa Shorthorn Association Annual Banquet & Meeting, FFA Hall. Please contact Brad Langhoff for reservations (so that he can get a head count) before February 5th at 319-360-2471
- Tuesday, February 14th**  
11:00 a.m. Iowa Royal Shorthorn Sale, Penningroth Sale Arena

**JLS ROAN VELVET 442Y \*x4176455**

bd 03/22/2011 roan heifer polled LE 442Y RE JLSF

**41**

SULL GNCC SALUTE 532R ET \*x, roan  
**J&J STIFLER 13U \*x, white**  
 OS AUGUSTA PRIDE 36M \*x, roan  
 DPC RED DEACON \*, red  
**JSL RED VELVET 442 \*x, roan**  
 DPC ICED GR VELVET \*x, roan

BEPD	4.9
WEPD	(20.1)
YEPD	(32.3)
MEPD	1.6

*Long Family Shorthorns*

Reserve the right to one flush at the buyers convenience.

The day this one was born we knew we had a good one. She's out of J&J Stifler 13U, the bull we purchased from Jeremy and Jamie Kennedy after he was slapped Grand Champion Bull at the 2009 Nebraska State Fair. She is complete, clean fronted, smooth shouldered, level topped, bold sprung with a ton of rib. She can compete big time or go home and make a tremendous cow. Showed her successfully last fall, and was Grand Champion Shorthorn Heifer, Charles City, Iowa, by Grant Toole.



**LHMN CHARMING VALERIE ET \*4181892**

bd 04/07/2011 roan heifer horned LE L132

**42**

KA'BA LEGEND 102 \*x, roan  
**JM VORTEC ET \*, roan**  
 WAUKARU WIMPLE 165 7/8 \*, red  
 WHR SONNY 8114 ET \*x, roan  
**LF CHARMING LADY L206 ET \*x, rwm**  
 NOLLSWOOD CHARMING 7/8 \*, red

BEPD	4.8
WEPD	(18.1)
YEPD	(29.2)
MEPD	1.7

*Lefman Shorthorns*

Want a heifer that can in to the ring and win tomorrow, here she is. Lucky Charm genetics at its finest, her mother is a full sister to the WHR Lucky Sunshine that is doing an outstanding job in the Greenhorn program. She can flat produce. Three sisters averaged \$5,500 in our fall sale. This one's recip mother didn't do the best job, but she is coming on strong. If you want hair, bone and mass in a sound functional package, here she is. CHV.



**OAKVIEW ROSELEAF 116J \*x4176737**

bd 04/01/2011 red heifer polled LE 1116

**43**

CF TRUMP X \*x, roan  
**OAKVIEW BIG JAKE 708TP ET \*x, red**  
 CF EQUITY FOOL 88 X \*x, red  
 CF PRIMO X ET \*x, roan  
**OAKVIEW ROSELEAF 704PR \*, red**  
 OAKVIEW ROSELEAF 04R \*x, roan

BEPD	5.5
WEPD	(21.8)
YEPD	(37.9)
MEPD	1.0

*Oakview Shorthorns*

This is a very good show heifer prospect from our performance oriented Roseleaf family. She is very big topped, deep and correct. Roseleaf 116J will make an excellent show heifer.

**PB DIVA 31 \*x4176857**

bd 04/10/2011 roan heifer polled LE B113

**44**

WHR SONNY 8114 ET \*x, roan  
**STUDER'S CONTROLLER 31R \*x, roan**  
 DSF PARTY GAL 34M x, red  
 SULL GNCC SALUTE 532R ET \*x, roan  
**BERGS DIVA-SALUTES PRIDE ET \*, red**  
 CF RODEO PRIDE 8109 X \*x, rwm

BEPD	5.1
WEPD	(21.1)
YEPD	(36.3)
MEPD	1.8

*Berg Shorthorns*

Diva is an April Controller 31R heifer. Diva is a long bodied, big topped, long necked heifer that comes right off our 2011 summer show string. She was part of our group Champion Best of Six Head at the Iowa and Minnesota State Fairs. Diva has a lot of show in her for a young junior for the National Junior show in Nebraska this summer.

**MITCH'S SEDGE PUFF 113 ET \*x4178512**

bd 04/10/2011 rwm heifer polled LE 113

**45**

CCC GOLD RUSH \*x, red  
**SS DEADWOOD 5103 ET \*x, roan**  
 AF MARGIES DREAM LADY 05 ET \*, roan  
 JM VORTEC ET \*, roan  
**MITCH'S SEDGE PUFF 417 \*x, roan**  
 DSF SEDGE PUFF 96TH \*x, roan

BEPD	4.7
WEPD	(20.7)
YEPD	(29.6)
MEPD	2.3

*Mitchell Family Shorthorns*

Puff is an ET calf out of our Vortec donor and SS Deadwood. Her full sister Taylor pictured had a very successful show career for Carly Main. Puff's sister by DF Waco was high selling heifer at the Family Legacies Sale this fall. Puff is built a lot like Taylor except red with white spots.



Full sib to Lot 45

**SS QUEEN STONE 155 ET \*x4182187**

bd 04/18/2011 roan heifer polled LE RE 155

**46**

CF TRUMP X \*x, roan  
**HD BLOODSTONE 603 ET \*x, roan**  
 NPS DESERT ROSE 004 \*, r/w  
 CF TRUMP X \*x, roan  
**CF 11 QUEENS 183 X ET \*x, red**  
 CF RODEO CASINO 100 \*, rwm

BEPD	6.2
WEPD	(21.0)
YEPD	(36.6)
MEPD	2.9

*Schrag Shorthorns*

Wow she has the look! Heifers like this is what makes showing Shorthorns so much fun. Sound made, big bellied and jet necked with awesome hair and a great disposition make this Bloodstone standout one to watch.





Studer's  
Controler  
31R



**WINEBROOK BUTTERCUP 207 \*x4177505**  
bd 06/07/2011 roan heifer polled LE RE 207

<b>51</b>	JAKE'S PROUD JAZZ 266L *x, roan WINEBROOK PATTY *x, roan WINEBROOK SHEILA *x, red	BEPD	1.2
	DEERHORN FAMOUS 319 x, rwm TLF BUTTERCUP 5412 *x, roan TLF BUTTERCUP 2424 *x, white	WE PD	(12.7)
		YE PD	(21.1)
		ME PD	2.4

*Winebrook Farm*

Winebrook Buttercup has show heifer written all over her. She is very long sided, chisel fronted heifer that is extremely flexible in her movement. Buttercup shows the right amount of muscle to dominate in the show ring and prove herself as a cow.

**BERG'S MISS VICTORIA \*x4181743**  
bd 04/20/2011 red heifer polled LE B150

<b>47</b>	WHR SONNY 8114 ET *x, roan STUDER'S CONTROLER 31R *x, roan DSF PARTY GAL 34M x, red	BEPD	3.9
	WF TORNADO *x, roan H B TD VICTORIA 311 *x, red HESPERO BANK T VICTORIA 17B x, red	WE PD	(17.9)
		YE PD	(29.0)
		ME PD	2.7

*Berg Shorthorns*

Miss Victoria is a solid cherry red, April heifer. She is a very attractive, long bodied and good fronted heifer. Victoria also has a very long neck with a very broody angular design. Bid with ease knowing your investing in a good show heifer prospect that will turn into an exceptional brood cow for your herd.

**WINEBROOK HALO 201X \*x4177504**  
bd 04/30/2011 roan heifer polled LE RE 201X

<b>48</b>	JAKE'S PROUD JAZZ 266L *x, roan WINEBROOK PATTY *x, roan WINEBROOK SHEILA *x, red	BEPD	0.9
	AR SU LU OSAGE 502 *x, red AR SU LU HALO 738 *x, rwm AR SU LU HALO 553 *x, rwm	WE PD	(19.2)
		YE PD	(31.2)
		ME PD	4.5

*Winebrook Farm*

Winebrook Halo is a stout, very sound moving heifer. She combines the thickness and femininity that any breeder can appreciate. Halo is a deep sided, tremendously bold sprung heifer all wrapped up in a moderately framed package.

**THILLS YOLANDA 15Y \*4181467**  
bd 05/06/2011 red heifer horned LE 15Y

<b>49</b>	JAKE'S PROUD LEADER 243H *, roan JAKE'S PROUD JAZZ 266L *x, roan JAKE'S JAZZY 250J 7/8 *x, red	BEPD	0.5
	JM VORTEC ET *, roan SIEVERS MISS CANDY 70T ET *, r/w DAWNING IMAGE *x, r/w	WE PD	(8.1)
		YE PD	(13.8)
		ME PD	2.4

*Thill Cattle Co.*

We are offering a really attractive Shorthorn female. Long fronted, deep ribbed and square made. She is sound and athletic on the move. A total complete package here. TH Free.

**DRM LOVELY LADY 121 \*x4175876**  
bd 05/19/2011 r/w heifer polled LE 121

<b>50</b>	WHR SONNY 8114 ET *x, roan DF WACO 6W ET *x, red DIAMOND HELENA DOTTIE 12H, roan	BEPD	5.8
	STUDERS PRETENDER 96TH *x, red BFS LOVELY LADY P 742 ET *x, rwm BFS LOVELY LADY 732 *x, rwm	WE PD	(29.5)
		YE PD	(43.2)
		ME PD	-0.3

*Braeden Mitchell*

Such a stylish, deep ribbed, sound moving heifer and just a late May. Waco heifers have been topping Shorthorn sales all fall and he really clicked with our Pretender daughter that goes back to Cory Bollum's Lovely Lady line. Check out her video at [www.mitchellfamilyshorthorns.com](http://www.mitchellfamilyshorthorns.com) then click on our Facebook link.

**ROANOKE ORANGEBLOSSOM2311 \*x4180901**  
bd 06/12/2011 roan heifer polled LE 2311

<b>52</b>	TPS CORONET LEADER 21ST x, white ROANOKE FLASHBACK 704 x, white ROANOKE JESSAMINE 693 x, roan	BEPD	1.0
	4D DOUBLE VISION 7/8 *, roan ROANOKE ORANGEBLOSSOM 804 *, roan ROANOKE ORANGEBLOSSOM 1294 *, roan	WE PD	(13.8)
		YE PD	(21.1)
		ME PD	2.1

*Labans Roanoke Farm*

This June heifer is very attractive with her red neck roan color. She has the profile to go with it. Her sire, Flashback, is getting more popular everyday and her dam is a full sister to Focus, who topped the 2002 Expo Sale. The Jerry Moore Family has used Focus and are very pleased with the calves. She has been calffood vaccinated. TH Carrier. Check her out on [edjecattle.com](http://edjecattle.com).

## VTS COUNT ON RUBY 6181 ET \*x4176572

bd 06/18/2011 roan heifer polled LE RE 6181

# 53

CF SOLUTION X ET \*x, rwm  
CYT FINAL COUNTDOWN 866 ET \*x, roan  
WHR LS DOLLY D 2116 ET \*x, roan

MILLVALE PATTERN 3723 \*x, roan  
TS RUBY 331N \*, r/w  
HOMEDAILE FASHION F \*, rwm

BEPD	4.2
WEPD	(19.9)
YEPD	(35.1)
MEPD	0.2

*Val Thoreson  
Shorthorns*

You have to stop and take a look at this heifer sale day! She is deep bodied, big boned, a dark cherry roan, and has a freaky front. Ruby has produced the champion show back heifer at the Iowa State Field Day the last two consecutive years, this heifer could be the third! She is only a June baby but, she has a huge future ahead of her and will be a ton of fun for the junior that picks her. She is a full sib to the bull I have in this sale, you'll see the consistency of my Ruby donor when you see them together. Check her out at [www.valthoresonshorthorns.com](http://www.valthoresonshorthorns.com).

## AF MARGIE DREAM LADY1115 \*4181628

bd 06/25/2011 red heifer horned LE 1115

# 54

AF WARRIOR 195 \*x, red  
KF AF VG WIDE TRAC 552 ET \*x, red  
AF SL PRETTY WOMAN ET \*x, roan

WHR SONNY 8114 ET \*x, roan  
AF MARGIES DREAM LADY 819 ET \*, red  
AF MARGIE'S DREAM LADY949 ET \*x, roan

BEPD	5.5
WEPD	(19.2)
YEPD	(28.7)
MEPD	-1.0

*Alden Farms*

Retaining the right to receive a flush at sellers expense and buyers convenience. An exciting show prospect that also combines some of the most sought after genetics in the breed. Dream Lady, Pretty Woman, Sonny, National Champion Warrior. A can't miss genetic package that comes to you in a very feminine, eye appealing, structurally sound package.



## AF PARTY GAL 1119 ET \*x4181625

bd 07/05/2011 rwm heifer polled LE 1119

## AF PARTY GAL 1118 ET \*x4181626

bd 07/05/2011 red heifer polled LE 1118

# 55

**A & B**

EIONMOR MR GUS 80C x, roan  
STUDERS PRETENDER 96TH \*x, red  
3S BUNNY 004 \*, rwm

STUDER'S PRINCE JAMES 99 x, roan  
DSF PARTY GAL 34M x, red  
BRENTWOOD PARTY GAL 5TH x, rwm

BEPD	2.7
WEPD	(21.1)
YEPD	(32.5)
MEPD	-2.0

*Alden Farms*

A tremendous opportunity to not only purchase a very competitive summer yearling show heifer but outcross genetics that will help make this female a valuable donor prospect. Party Gal 34M is also the mother of Bergs Controler bull who won Denver, Jazz Man, one of Studer's powerful herd sires. Her mating to Pretender has produced above our expectations. We can't decide which one we like best, so you decide, the other will go back into our herd.

## CHOICE LOT

*AF Party  
Gal 1119*



*AF Party  
Gal 1118*

## TPS STYLISH CATHY 7111 \*x4179418

bd 07/20/2011 roan heifer polled LE T387

# 56

CF TRUMP X \*x, roan  
AHL TRUMP STYLE 198P ET \*x, white  
CEDAR CURVE PROM DATE 94 \*x, roan

WHR SONNY 8114 ET \*x, roan  
SS CATHY 106SY \*, roan  
K'S CATHY 388, roan

BEPD	2.3
WEPD	(7.6)
YEPD	(17.0)
MEPD	-0.3

*Long Family  
Shorthorns*

Seller will provide two units of semen from their bull battery for breeding. This is a very stylish, red neck roan heifer that is extremely correct. Clean fronted, long necked, with spring of rib. She's in that different age bracket everybody tries to find. A granddaughter of Sonny & Trump. She is extremely easy to lead and would be a great first time project for a young person.

## J&J PRIMA SOXS 1Y ET \*xAR53688

bd 01/28/2011 bwm heifer polled LE RE 1Y

# 57

CF TRUMP X \*x, roan  
CF PRIMO X ET \*x, roan  
NPS DESERT ROSE 004 \*, r/w

DJ ENGINEER E309 \*x, blk  
KEN JR SOXS JR16 x, blk

BEPD	2.0
WEPD	13.1
YEPD	(24.7)
MEPD	1.5

*J&J Show Cattle*

A full sib to the blue roan bull, J&J Midnight Sun, that we also have consigned to this sale. This gal is made just like her mother, nice bone, good hip and smooth made; combine that with her strong maternal traits on both sides and you got cow power! She has a wonderful disposition for a junior to show and have fun with. I wanted to keep her for our son but Jeremy said we have to offer our best. TH/PHA Free pedigree.

# IOWA

## Royal

*Shorthorn Sale*



HEIFERS

PLUS HEIFERS



**J&J PSF TROPICAL STORM ET \*xAR53595**

bd 04/02/2011 roan HEIFER POLLED LE RE 6Y

CF TRUMP X \*x, roan  
**58** DF VEGAS 310M ET \*x, white  
 NPS MIRAGE 544 ET \*sx, roan  
 4D DOUBLE VISION 7/8 \*x, roan  
 RH 170 13/16 \*x, roan  
 RH 205B 3/4 x, red

BEPD	5.0
WEPD	16.2
YEPD	(24.5)
MEPD	1.6

A beautiful, hairy, roan, plus heifer, that will be fun to own! She is a TH Free daughter of the famous DF Vegas/ Storm is good boned, nice topped, freaky necked, all put together in a smooth feminine package. TH/PHA Free.

*J&J Show Cattle and Preferred Stock Farm*

**PAW TINKERBELL 2ND Y11 \*xAR52792**

bd 05/16/2011 rwm heifer polled LE RE Y11

TBSC WHITESNAKE 101T ET \*x, white  
**59** SBR ROAN RIDER 45 \*x, roan  
 SBR RIDERS ANGIE 532 \*x, red  
 PAW WITCH DOCTOR COW

BEPD	1.5
WEPD	12.5
YEPD	(22.6)
MEPD	3.3

Tinker 2's half sisters turned heads in Louisville; one wins her class in the ShorthornPlus Open Show, the other stands first in the Heifer Calf Futurity. This one could be the pick of the litter by SBR Roan Rider 45. TBSC Whitesnake, Roan Rider's sire, was more commonly known as White Cloud when Lautner's sold semen on him. Coupled with a direct Witch Doctor daughter that raised this calf at 10+ years of age, Tinker 2 is outcross clubby at it's best. She's deadly good from the side, yet big bodied and powerful...no fairy dust needed! Get noticed in the ring with this red one; she's only one generation from black if you wish.

*G&S Shorthorns*

**BRC MUNCHKIN \*xAR53787**

bd 05/25/2011 roan heifer polled LE RE 1125

SS COWBOY UP 411 \*x, red  
**60** TOP NOTCH DIAMOND RIO \*x, roan  
 JCC CHE SARA SARA HZ \*x, white  
 X-BRED

BEPD	NA
WEPD	NA
YEPD	NA
MEPD	NA

ShorthornPlus heifer with a huge personality. A long, deep, thick made heifer who will make a great brood cow.

*B Rae Co Farm*



**LHMN EBONY CHARM \*xAR54102**

bd 07/02/2011 blk heifer polled LE RE L144

ANGUS BULL  
**61** K-KIM BASELINE 80S ET \*x, roan  
 LHMN CHARMING GIRL 09 ET \*x, roan  
 LF CHARMING LADY L206 ET \*x, rwm

BEPD	NA
WEPD	NA
YEPD	NA
MEPD	NA

Serious summer born here. Awesome shaped with that maternal look. Sired by a double bred OCC Anchor son that we selected from Lee's Cattle of Colorado. Her dam is headed straight to our donor pen. She is a full sister to our bull offering and tracers to Lucky Charm and Pretender 96th. She's a little young but this one's best days are ahead of her. CHV.

*Lehman Shorthorns*

**WAYMAR BLACK WIDOW**

bd 07/05/2011 blk heifer LE715

CF TRUMP X \*x, roan  
**62** CF PRIMO X ET \*x, roan  
 NPS DESERT ROSE 833 ET \*x, r/w  
 ANGUS

BEPD	NA
WEPD	NA
YEPD	NA
MEPD	NA

**Sells with breeding privileges to any of the sellers herd bulls.** This is really a beautiful heifer. She is really hairy and feminine in her design. She is an own daughter of CF Primo who is turning out to be quite a find for the offspring he has been producing. Black Widow is out of a picture Angus dam. This could be a great start to an amazing ShorthornPlus program. TH/PHA Free.

*Waymar Show Cattle*

**Directions—**

**Physical Location:** East 30th Street and University Avenue in Des Moines, Iowa. The 400-acre Iowa State Fairgrounds are located 10 minutes east of downtown Des Moines. Due to construction on I-235, you are encouraged to visit [www.i235.com](http://www.i235.com) to plan alternate routes to the fairgrounds. The Iowa Department of Transportation suggests the following routes: **Eastern Iowa:** From I-80, take Exit 141, travel south on Hwy. 65 to Exit 79 and head west on Hwy. 163 (University Avenue), approximately three miles to the fairgrounds. **Northern Iowa:** From I-35, take I-80 eastbound, take Exit 141 (Hwy. 65 bypass), travel south on Hwy. 65 to Exit 79 and head west on Hwy. 163 (University Avenue) approximately three miles to the fairgrounds. **Western Iowa:** From I-80 take I-235, exit East University, follow the signs to East University to the fairgrounds. **Southern Iowa:** Take I-35 to Hwy. 5 to Hwy. 65 to Exit 79 and head west on Hwy. 163 (University Avenue) to the fairgrounds.

## SM SWEET LADY ET \*x4132766

bd 04/07/2007 roan donor female polled LE 74T

63

CF TRUMP X \*x, roan  
**WHR SONNY 8114 ET \*x, roan**  
 WR4 RODEO CUMBERLAND 3R52 \*, red  
 SCC ESKIMO JOE G50 7/8 \*x, roan  
**JG745 WANDA'S LADY EJ002 \*, roan**  
 JG9332 WANDAS LADY WS745 \*, roan

BEPD	(4.3)
WEPD	(21.3)
YEPD	(33.3)
MEPD	23.1

*Gilman Shorthorns*

Consigner is selling the rights to one successful flush with a minimum of six transferable embryos with half down now and the other half at the completion of the flush. Flush will be at buyer's expense and the owner's convenience and will take place at Ultra Ova in Adair, Iowa, and must be done by May 15, 2012. What a great opportunity to invest in popular genetics. Sweet Lady is the dam of the high selling female at the 2011 Iowa Royal, and was undefeated as a cow/calf pair in 2010. She has averaged 12 grade 1 or 2 embryos in three flushes and is open and ready to flush anytime. This Sonny daughter has been the star of our ET program. TH/PHA Free.



## EMBRYOS

selling one package of five

64

CF SOLUTION X ET \*x, rwm  
**SULL GNCC PURE SOLUTION ET \*x, red**  
 MILESTONE SABLE 01 \*x, red

*Waymar Show Cattle*

WHR RT LUCKY SUNSHINE

**Guarantee one pregnancy if implanted by a certified technician.** Due to the large inventory of embryos we got from the Milestone herd we have decided to offer these embryos. Verl always said to stack the great cow families to receive great individuals. These embryos have the Rose T90, Sable and Lucky Charm cow families in them. Sunshine was the top seller in a past WHR production sale and now a donor for Greenhorns in Ohio. Sunshine is a Sonny out of Lucky Charms mother. How cool is that!



*SULL GNCC Pure Solution*

## EMBRYOS

selling one package of three

65

MSF EQUITY 43 x, rwm  
**CCS EQUITY'S CHARMER ET \*x, rwm**  
 LF LUCKY CHARM \*, roan  
 CUNIA 3/4 \*, r/w  
**JM JOE DAVINCI ET \*xar, roan**  
 K-KIM MONA LISA 34L ET \*, white  
 and  
**EPINAL (MAINE)**

*Waymar Show Cattle*

CF TRUMP X \*x, roan  
**WAYMAR HSFTSF CASINO ET \*x, roan**  
 CF RODEO CASINO 100 \*, rwm

**Guarantee one pregnancy if implanted by a certified technician.** These three matings have been proven and out of a great donor. Flushes in this donor have averaged \$5,000 in past offerings. You can ask anyone who has seen this cow knows just how impressive she is. Casino is a moderate frame, deep, full sister to all the famous Queen cows produced by the stellar Cates program. This is a little bit of a different offering but thought it would be cool to mix it up. We have a daughter of Charmer that was third at the Junior Nationals, Epinal the famous Maine sire has sired two full brothers for the Rods and Kohlstaed's and Davinci has sired our show bull for next year. Each mating could be very special take a chance!



*JM Joe Davinci*

## EMBRYOS

selling one package of four

66

WHRRT AUGUSTASUNRISE 2107 ET \*x, roan  
**HD SWAGGER 802 ET \*x, roan**  
 HD REFLECTION 021 \*x, rwm  
 WHR SONNY 8114 ET \*x, roan  
**SS DREAM LADY 560 ET \*, red**  
 AF MARGIES DREAM LADY 05 ET \*, roan

*Schrag Shorthorns*

**Guarantee one pregnancy if implanted by a certified technician.** The production of the Dream Lady cow family simply could not be hotter. Add a shot of Sonny with the legendary AF Margies Dream Lady 05, combine with the prolific, consistent production of Swagger and you have a recipe for success.



*HD Swagger*



*AF Margies Dream Lady 05*

# EMBRYOS



HD  
Swagger



SS Augusta  
Pride 3127



SULL Primetime



SULL Augusta  
Pride 9014



HD Bloodstone

## EMBRYOS

selling one package of four

67

WHRRT AUGUSTASUNRISE 2107 ET \*x, roan  
**HD SWAGGER 802 ET \*x, roan**  
 HD REFLECTION 021 \*x, rwm  
 WHR SONNY 8114 ET \*x, roan  
**SS AUGUSTA PRIDE 270 ET \*x, roan**  
 SS AUGUSTA PRIDE 3127 \*x, rwm

Schrag Shorthorns

**Guarantee one pregnancy if implanted by a certified technician.** A rare opportunity to acquire genetics from a direct daughter of the legendary 3127. This Swagger X Augusta Pride mating is a sure bet. We will have several of these sibs born this spring and they are already slated to headline our next sale! Buy with confidence and get ahead of the pack.

## SEXED HEIFER EMBRYOS

selling one package of three

68a

CF SOLUTION X ET \*x, rwm  
**SULL PRIMETIME ET \*x, roan**  
 K-KIM MONA LISA 34P \*x, white  
 CF SOLUTION X ET \*x, rwm  
**SULL AUGUSTA PRIDE 9014 ET \*x, red**  
 WHR RT AUGUSTA PRIDE 510 ET \*x, roan

Ripberger Farms

**Guarantee one pregnancy if implanted by a certified technician.** SULL Augusta Pride 9014 is by WHR RT Augusta Pride 510 and a full sister to Hoblyn's SULL Solution's Pride many time champion heifer. Heifers out of this cow and SULL Primetime, a two time National Champion, promise to be outstanding show heifers and donor cows.

## SEXED HEIFER EMBRYOS

selling one package of three

68b

CF TRUMP X \*x, roan  
**HD BLOODSTONE 603 ET \*x, roan**  
 NPS DESERT ROSE 004 \*x, r/w  
 CF SOLUTION X ET \*x, rwm  
**SULL AUGUSTA PRIDE 9014 ET \*x, red**  
 WHR RT AUGUSTA PRIDE 510 ET \*x, roan

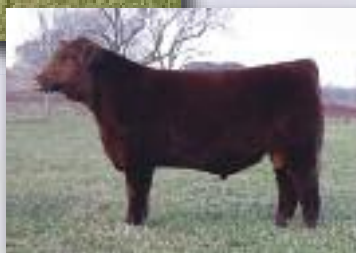
Ripberger Farms

**Guarantee one pregnancy if implanted by a certified technician.** SULL Augusta Pride 9014 is by WHR RT Augusta Pride 510 and a full sister to Hoblyn's SULL Solution's Pride many time champion heifer. Mated to Bloodstone is the same mating by blood as the \$60,000 top selling heifer in the 2011 Simple Choices Sale.

## CHOICE LOT



RF BFS  
Revival TP  
B601



SULL  
Red Rock

## SEXED HEIFER EMBRYOS

selling one package of three

69a

CF SOLUTION X ET \*x, rwm  
**SULL PRIMETIME ET \*x, roan**  
 K-KIM MONA LISA 34P \*x, white  
 CF TRUMP X \*x, roan  
**RF BFS REVIVAL TP B601 \*x, roan**  
 SS REVIVAL \*xar, rwm

Ripberger Farms

**Guarantee one pregnancy if implanted by a certified technician.** Revival 601 is only one of three daughters of Schrag's SS Revival and CF Trump. Heifers out of this cow and SULL Primetime, a two time National Champion, promise to be outstanding show heifers and great donor cows.

## EMBRYOS

selling one package of three

69b

TEGM RED ADVANTAGE 100T \*xma, red  
**SULL RED ROCK 9351 ET \*xar, red**  
 JSF PRINCESS 0441E x, red  
 CF TRUMP X \*x, roan  
**RF BFS REVIVAL TP B601 \*x, roan**  
 SS REVIVAL \*xar, rwm

Ripberger Farms

**Guarantee one pregnancy if implanted by a certified technician.** Revival 601 is only one of three daughters of Schrag's SS Revival and CF Trump. Here is a chance to get heifers or bull with some different breeding to keep and use in your herd or sell.

# SEXED HEIFER SEMEN

## HD SWAGGER 802 ET \*x4141971

bd 03/07/2008 roan reference bull polled LE RE 802

70

WHR SONNY 5114 ET \*a, roan  
WHRRT AUGUSTA SUNRISE 2107 ET \*x, roan  
SS AUGUSTA PRIDE 3127 \*x, r/wm

JG RED CLOUD x, red  
HD REFLECTION 021 \*x, r/wm  
NPS DESERT ROSE 004 \*, r/w

BEPD	2.9
WEPD	18
YEPD	29
MEPD	0

*Schrag Shorthorns*

**Selling three units of 5 mil. sexed heifer semen.** Swagger has rapidly established himself as one of the premier sires in the breed today. This will be the last opportunity this spring to acquire sexed semen as it will no longer be available on the open market.



# SEMEN

## SULL GNCC GREY GOOSE ET \*x4113741

bd 01/07/2006 roan reference bull polled LE 675

71

CF TRUMP X \*x, roan  
CF SOLUTION X ET \*x, r/wm  
NPS DESERT ROSE 004 \*, r/w

JM VORTEC ET \*, roan  
K-KIM MONA LISA 35L ET \*, white  
HR MONA LISA W684Y \*x, r/wm

BEPD	(4.7)
WEPD	(23.2)
YEPD	(39.1)
MEPD	2.6

*Schrag Shorthorns*

**Selling five units.** Grey Goose semen is becoming very rare and harder to find. This could be one of the last chances.



SEMEN

## Silent Auction

to be held during the Iowa Royal Sale at the 2012 Iowa Beef Expo. Money raised will be used to help fund the Hospitality area of the 2013 Shorthorn Junior National held in Des Moines, Iowa. The following have donated semen and other items for the auction. Buyer pays all shipping charges on semen and donor will provide AI certificates at no charge up to number of units sold.

<b>Haywood Cattle Co., 641-750-5770</b>	10 units - B Controler's Jake	x4151274
<b>Duis Farms, 815-278-1065</b>	10 units - DF Vegas 310M ET	x4054940
<b>Mitchell Family Shorthorns, 319-269-4579</b>	3 units - DF Waco	x4152747
<b>Laban's Roanoke Farm, 563-542-3155</b>	10 units - Roanoke Flashback 704	x4087942
<b>Herman Flatland Shorthorns, 641-420-2850</b>	5 units - Tonic's Last Call TLC Wood carving of a calf lying down	x4137512
<b>Long Family Shorthorns, 319-560-9458</b>	10 units - DRM Mickey 415	x4085119
<b>O-Dale Farms, 712-799-4773</b>	5 units - HC Warrior 10W	x4164307
<b>Louis Mann &amp; Sons,</b>	10 units - JB Ultra Tuff	x3955688
	10 units - Bern-A-Dale Magnum	x4023197
	5 units - Bern-A-Dale Eagle One	x4043970
<b>Berg's Shorthorns, 319-240-9012</b>	10 units - - Studer's Controler 31R	x4093271
<b>Brad Davis - Alum Line Trailers</b>	Show Box	
<b>Bern-A-Dale Shorthorns, 712-482-3386</b>	2 units - HS Rodeo Drive 062WR	x3819643
	2 units - Deer Trail Awesome ET	x3851564
	2 units - CC Cujo	x3784703
	2 units - HS Instant Enticer	x3807192
	2 units - Mr Minot	x3582796



# Cagwin Cattle Services, LLC

P.O. Box 77 • Virginia, Illinois 62691

First Class Mail  
US Postage  
Paid  
Permit #308  
Omaha, NE

Catalog by Shorthorn Country

## CONSIGNORS' INDEX

<b>AEGERTER CATTLE CO. &amp; KANE AEGERTER</b> .....	24, 25	<b>LONG FAMILY SHORTHORNS/JOHN LONG</b> .....	40, 41, 56
520 S Evergreen Drive • Seward, NE 68434 • 402-641-4696		27 29 54th St. • Vinton, IA 52349 • 319-560-9158	
<b>ALDEN FARMS/JIM EVERMAN</b> .....	18, 54, 55a&b	<b>MASON &amp; BRAEDEN MITCHELL</b> .....	9, 50
Robert Alden • 602 E Berry St, Hamilton, MO 64644 • 816-632-8509		3051 Addison Ave. • Nashua, IA 50658 • 641-330-5207	
<b>B RAE CO FARM/BRENDA R COUSINS</b> .....	32, 60	<b>TOM MITCHELL</b> .....	6, 45
1873 Olsen Ave, Blairsburg, IA 50034 • 515-450-2103		1347 180th St. • Waverly, IA 50677 • 319-269-4579	
<b>BERG SHORTHORNS/PETER &amp; JOSH BERG</b> .....	44, 47	<b>MOOTHART CATTLE CO.</b>	
3425 Jersey Ave, Osage, IA 50461 • 641-220-0717 • 641-832-7772		<b>TYLER &amp; SHELBY MOOTHART</b> .....	10
<b>BERN-A-DALE SHORTHORNS</b>		1890 140th St. • Fairfield, IA 52556 • 641-779-4758 • 641-919-0264	
<b>BERNIE BOLTON FAMILY</b> .....	29, 30	<b>OAKVIEW SHORTHORNS</b>	
38995 Honeysuckle Road • Oakland, IA 51560-4326		<b>LONNIE FLACK FAMILY</b> .....	2, 43
712-482-3386 • cell: 402-350-9430		19733 677th Ave. • Nevada, IA 50201 • 641-377-2112	
<b>COURVILLE CATTLE CO.</b> .....	12	<b>REANNA OBRECHT</b> .....	3
3288 W. 6940 N. Rd. • Bourbonnais, IL 60914 • 815-468-1824		2032 900th St. • Harlan, IA 51537 • 712-799-4432	
<b>FEVOLD STOCK FARM/STEVE &amp; BECKY</b> .....	15	<b>WYATT D. OBRECHT</b> .....	7
1777 165th St. • Gladbrook, IA 50635 • 641-352-0098		916 Red Bud • Harlan, IA 51537 • 712-799-4773	
<b>GANA/NISLEY</b> .....	22	<b>O'DALE FARMS/CHARLIE L OBRECHT</b> .....	5
2200 West Panama Rd, Martell, NE 68404 • 402-440-0430 • 402-430-2526		1040 Umbrella Rd. • Harlan, IA 51537 • 712-799-4773	
<b>GILMAN SHORTHORNS</b>		<b>FRED RIPBERGER</b> .....	31, 38, 68a&b, 69a&b
<b>CARY &amp; ETHAN GILMAN</b> .....	16, 37, 63	7234 E. 2700 Rd. • Sidell, IL 61876 • 317-694-4273	
1279 Sheldon Ave. • Stuart, IA 50250 • 515-523-2917 • cell: 515-360-1445		<b>ROCA SHORTHORNS/ROGER CALEASE</b> .....	14
<b>GS&amp;J SHORTHORNS</b>		19468 Willow Ave, Clarksville, IA 50619 • 319-367-2524 • 319-415-4947	
<b>GREG, SANDY &amp; JOE COLGAN</b> .....	23, 59	<b>DALE STUDER FAMILY &amp; AUSTIN</b> .....	17, 20
11534 State Route 40 • Bradford, IL 61421 • 515-450-7665		2125 125th St. • Creston, IA 50801 • 641-344-8035	
<b>HAHN FAMILY SHORTHORNS/ DICK HAHN</b> .....	21	<b>NATE &amp; JENNY STUDER</b> .....	8
74 Co Rd 2700 E, Minoak, IL 61760 • 309-645-3911		3014 130th St. • Creston, IA 50801 • 641-344-8487	
<b>HAYWOOD SHORTHORNS/STVE &amp; LINDA HAYWOOD</b> .....	1	<b>SCHRAG SHORTHORN FARMS</b> .....	39, 46, 66, 67, 70, 71
34675 300th St, Union, IA 50258 • 641-486-2346 • 641-750-5770		<b>CORY, MELISSA, SAMANTHA &amp; JAXSON SCHRAG</b>	
<b>HERMAN'S FLATLAND SHORTHORNS</b> .....	35	27634-443 Ave. • Marion, SD 57043 • 605-925-4804 • 605-941-5241	
4121 Hwy 218, Osage, IA 50461 • Karl: 641-732-5778 • Sam: 641-420-5231		<b>THILL CATTLE CO./BRYAN &amp; AMY THRILL</b> .....	49
<b>J &amp; J SHOW CATTLE &amp; PREFERRED STOCK FARM</b>		1169 30th Pl. • Pleasantville, IA 50225 • 319-330-0809	
<b>JEREMY &amp; JAMIE KENNEDY</b> .....	26, 27, 57, 58	<b>THORESON SHORTHORNS/VAL THORESON</b> .....	4, 33, 36, 53
2250 L Rd. #1 • West Point, NE 68788 • 402-380-9164 • 402-380-3259		1801 Sunray Ave. • Mankato, MN 56001 • 507-779-6378	
<b>LABANS ROANOKE FARM/JOE &amp; LINDA LABAN</b> .....	52	<b>WAYMAR SHOW CATTLE</b>	
26864 S. Garryowen Rd. • Bernard, IA 52032		<b>WAYNE &amp; JAKE TEMPLE</b> .....	11, 62, 64, 65
563-879-3154 • 563-542-3155		3261 E 3rd Rd. • LaSalle, IL 61301 • 815-223-8905 • 815-252-4605	
<b>LEEMON STOCK FARM/CODY, CLINT &amp; WES.</b> .....	13, 28, 34	<b>WINEBROOK FARM/GRADY RUBLE</b> .....	48, 51
42274 N 1300 E Rd, Hoopeston, IL 60942 • 217-283-7922 • 217-304-3612		72746 Co Rd 46, Albert Lea, MN 56007	
<b>LEHMAN SHORTHORNS/KURT &amp; JERRY LEHMAN</b> .....	19, 42, 61		
S. 4263 Meyer Rd. • Reedsburg, WI 53959			
Kurt: 608-434-4484 • Jerry: 608-434-4483			